

1 Gingivoperiosteoplasty tech. → boneless bone grafting. (GPP)

- Pioneered by SKOOG (1964)
- GPP has been used to close alveolar defect and utilize the presumed potential of periosteum for bone formation to produce.

'Boneless Bone Graft'

- The edges of the cleft alveolus and cut palate are split and closed in 2 layers.
- Studies have shown 73% of patients w/ GPP do not require 2° bone graft & that GPP alone along w/ 2° alveolar bone graft produce better bone formation as compared to conventional alveolar bone graft alone.
- However Contra vertical as GPP has ⊖ growth of Maxilla.
⊗ ⊗

Microform Cleft Lip

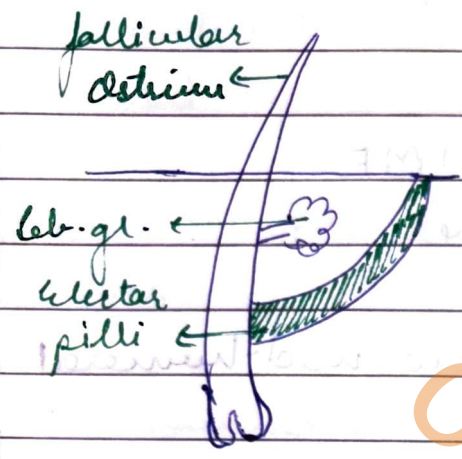
- Variant of cleft lip that primarily involves the vermillion
- Also of a mini cleft / forme fruste cleft / minimal cleft / Occult cleft / nature's union.

Mulliken classification

- Mini Microform → cleft till vermillion notch
Cupid's bow points at same level
- Microform → cleft involves vermillion & < 3mm of lip
above cupid's bow
- Minor form - > 3mm of body of lip, above cupid's bow
is cleft.

HAIR.

* Hair loss is reversible as long as the attachment of arrector pili m/s is maintained as in Alopecia areata, telogen effluvium, early androgenetic alopecia.
Attachment is lost w/ adv. miniaturization & in scarring alopecia.

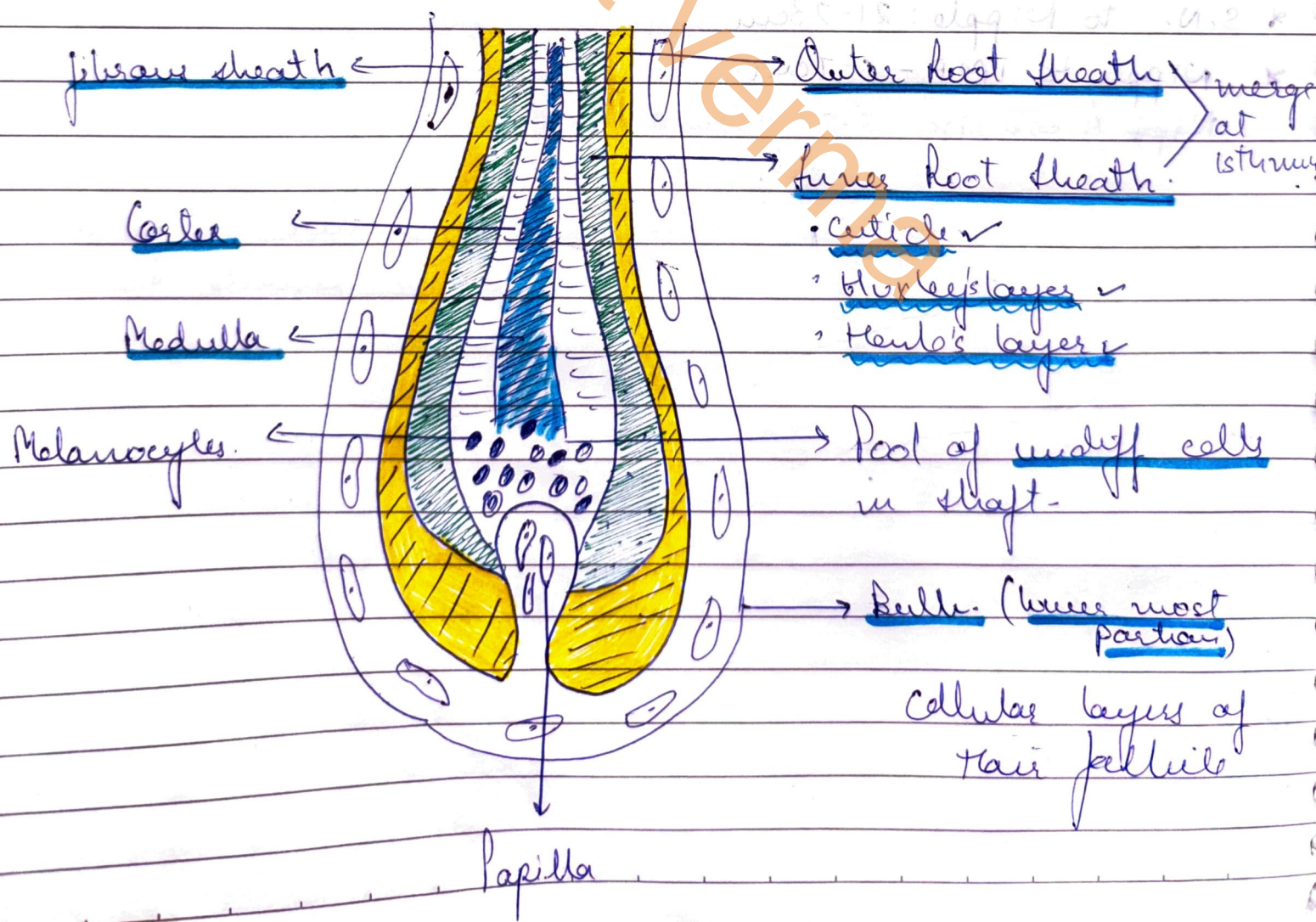


Fundibulum: follicular ostium to sebaceous gland.

Isthmus: Sebaceous gland & arrector m/s.

Inferior seg. - bulge + matrix. Arrector pili to bulb.

* Fundibulum + Isthmus remain constant + transient cycle. Inferior part undergoes changes.



Hair Cycle ACT

- Anagen / Growth 3-4 yrs
 - Catagen / Involution 3-4 wks
 - Telogen / Rest 3-4 mon.
 - Kerogen / shedding / release of telogen hair
 - Kerogen / shedding / empty hair follicle phase 2-5 months.
- ↓ 2-5 mo.
- Kerogen / empty hair follicle a/y telogen

- 20-90% Hair follicles - Anagen ✓
- 2% " " - Catagen ✓
- 10% " " - Telogen ✓

Causes of Hairfall/loss

#1 Hairfall Disorders

Telogen Effluvium

- Acute ATE
- Chronic CTE (>6mo)

Anagen Effluvium

when impairment of mitotic or metabolic activity of hair follicle.

#2 Hair loss Disorders

Scarring

hair follicles irreversibly destroyed due to destruction of stem cells in bulge area.

Non-Scarring

Pattern hair loss

- ③ A-A
- ④ Trichotillomania

- ⑤ Traction hair loss

Oral Medication for Alopecia

① FINASTERIDE

MOA: inhibitor of 5 α reductase

; \uparrow Hair Diameter + \uparrow hair count

resp for conversion of T \rightarrow DHT

Dose: 1mg daily

② Paradox in males

DHT - \uparrow head growth
= \downarrow hair growth
Scalp.

C/T: Kidney & Pregnancy ✓

: no blood donation for 6mo off best dose ✓

- 9/1 - Impaired spermatogenesis, Poor motility (reversible on cessation)
- ↓ libido ✓
 - erectile dysfunction ✓
 - ↓ ejaculate volume ✓
 - Depression, fatigue, insomnia, panic attacks.] → Part finasteride syndrome.
 - Gynecomastia ✓
 - ↓ PSA (marks early detection of Prostate carcinoma) ②

Minoxidil

2%, 5%

- Minoxidil converted into minoxidil sulfate by the enzyme sulfotransferases in ORS
- Req. vehicle like H_2O , ethanol etc. to improve solubility: min, min

MOA ① Prolongs latent period of hair cycle. i.e. time b/w shedding in telogen hair & onset of next anagen.

② Opens K channels, causes hyperpolarisation of cell membrane, cell moves to G₁ phase of cell cycle; cell proliferates.

③ Causes delay in hydrolysis of cAMP by inhibition of phosphodiesterase → thus causing vasodilation.

④ Ca^{2+} inhibits EGF. Minoxidil opens K channels, K channel inhibits Ca entry & hence EGF can act.

S/E - Irritation/dermatitis ✓
Headache ✓

C/I - Preg / lactⁿ
Hypertensⁿ inhib.

Principles of hair transplant

- ① Priority of frontal zone ✓
- ② Less is more ✓
- ③ Use 'Gradient Density' technique ✓ → Density highest in anterior & central region
- ④ Do not make 'transplants' to perfect ✓
- ⑤ Transplant future holding area ✓

Recent Adv

- ① PRP ✓
- ② LLLT is low level laser therapy ✓
- ③ Mesosmes ✓

Principle: Photo biomodulation

- Stimulates growth of hair follicles.
- ↑ Anagen phase, ↑ Density, ↑ thickness. F2/FM both
- ↑ Circulation
- ↓ Inflammation

- 3 types →
- laser comb ✓
 - laser helmet ✓
 - laser cap ✓

How to use → 630-660 nm
 → 20-30 min daily / alt. days.

S/E - Headache, pruritis, dryness, scalp tenderness etc.

Hair transplant

Date.....

- Donor Area - COLE'S safe donor area - occipital region.
- Donor Density - 1cm²
 - Hair follicles counted using densitometer

- Zones of Balding -
- Planning Hair Transplant.

A) Frontal Hair line - Ant. Hair line = 7-10cm from glabella.
 Widow's peak if pt want.